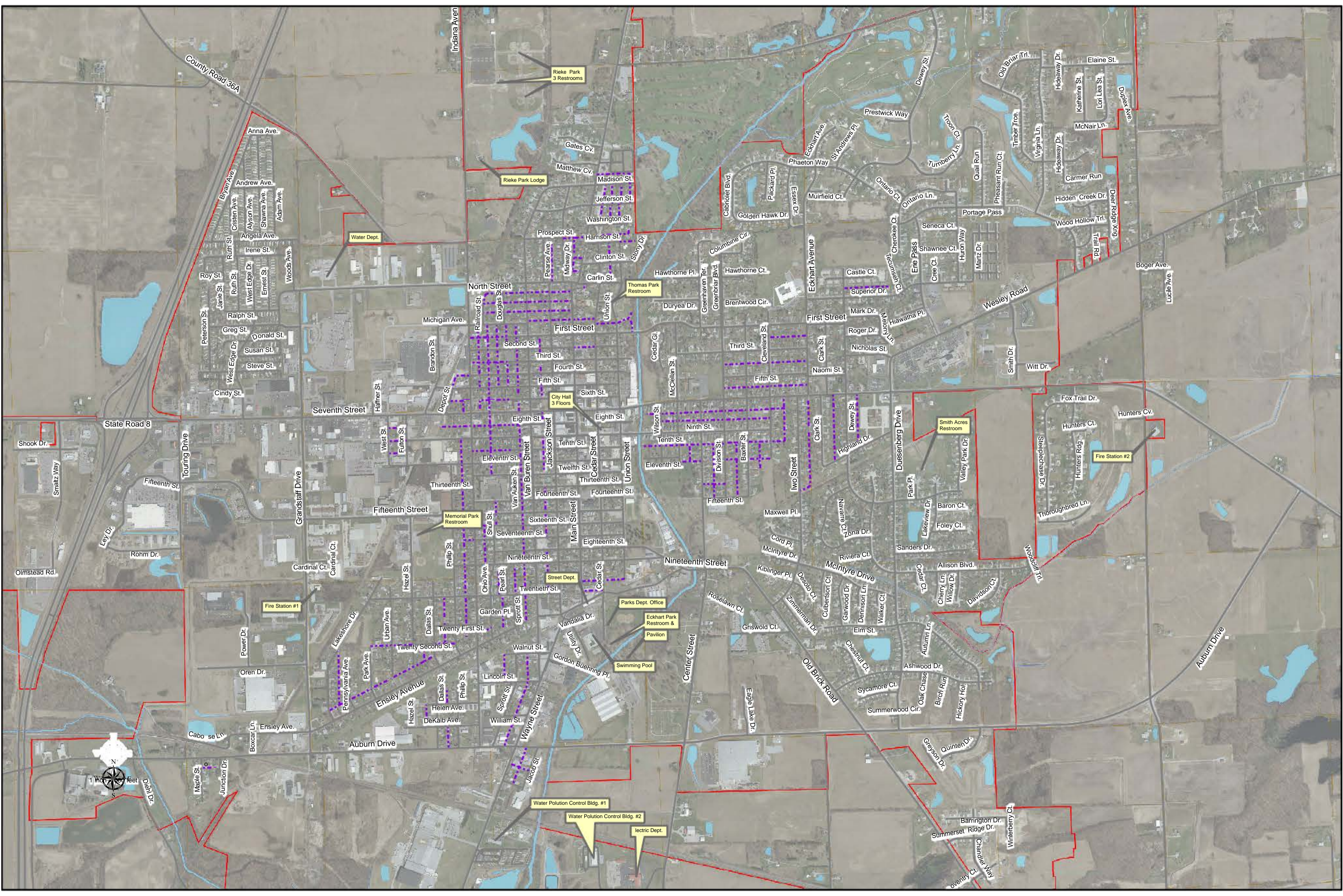


Appendix D: Buildings and Facilities Assessments

2013

A full re-evaluation of all City buildings and facilities will be completed in 2022, as many have been updated, or facility has been eliminated.



County Road 36A

Anna Ave.

Andrew Ave.

Angela Ave.

Irene St.

Roy St.

Greg St.

Cindy St.

State Road 8

Fifteenth St.

Rohm Dr.

Cardinal Ct.

Oren Dr.

Ennsley Avenue

Auburn Drive

Maple St.

Junction Dr.

Indiana Avenue

Rieke Park 3 Restrooms

Rieke Park Lodge

Water Dept.

Thomas Park Restroom

City Hall 3 Floors

Memorial Park Restroom

Fire Station #1

Street Dept.

Parks Dept. Office

Eckhart Park Restroom & Pavilion

Swimming Pool

Water Pollution Control Bldg. #1

Water Pollution Control Bldg. #2

Electric Dept.

Smith Acres Restroom

Fire Station #2

